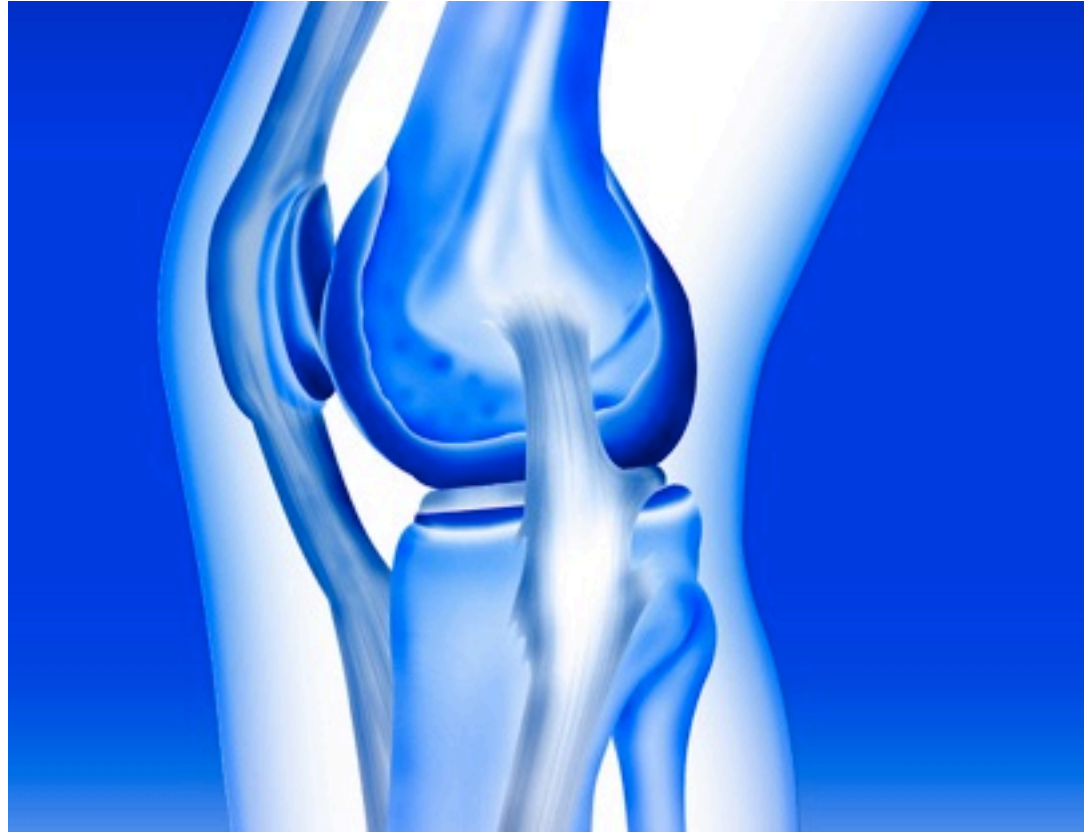


Total Knee Replacement

Bangkok Hospital Pattaya 2009

Total Knee Replacement is a surgical procedure in which the damaged parts of the knee joint are replaced with artificial parts.



Surgery by Bangkok Hospital Pattaya Orthopedic Team

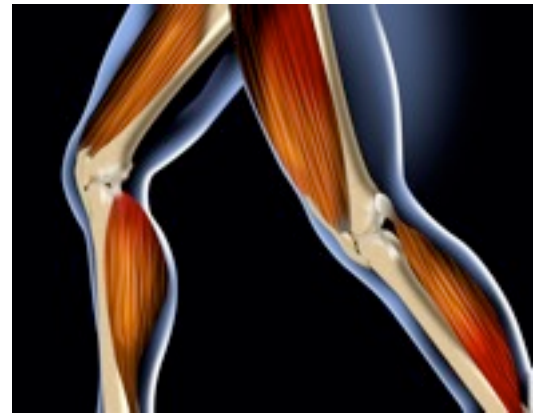
Total Knee Replacement

If knee pain has robbed you of some of life's simple pleasures - taking a walk, playing with your (grand)children, working in the garden - don't give up hope. With knee replacement surgery, you can lead an active and satisfying life again.

Improve your overall quality of life. With less pain and greater mobility, you'll be able to perform daily tasks and low-impact activities more easily and lead a more comfortable, more independent life.

Dramatically reduce knee pain. More than 90% of total knee replacement patients experience a dramatic reduction of knee pain.

Improve your range of motion. While your artificial knee won't be as good as your real knee was in its prime, its range of motion should noticeably increase.



PLEASE VISIT OUR 3D LIBRARY TO SEE AN ANIMATED EXPLANATION OF THIS PROCEDURE WWW.WELLNESSTRAVEL.COM/E-LIBRARY-ORTHOPEDIC

Complete Surgery Packages, including 2 nights in a hotel, starting at 10,715 USD!

Enquire here for a quotation for a package of your choice, please indicate your preferred time for travel and treatment and the length of your stay.

ENQUIRY@WELLNESSTRAVEL.COM

BANGKOK HOSPITAL Pattaya

The rooms at Pattaya Hospital are outfitted to the standards of five-star hotels, with an array of suites, single, double, four and even six-bed rooms for patients to choose from.



Total Knee Replacement Bangkok Hospital Pattaya

Bangkok Hospital Pattaya

Founded in 1990 with only 100 beds. 10 years later, a new building for a specialized clinic with 200 beds was built to provide care for a huge number of patients with special and complicated medical needs.

Bangkok Hospital Pattaya, now 400 beds facility, has become the center of specialty health care which provides special diagnostic and curative services. Such as the heart center, which is equipped with special diagnostic instruments to help analyzing heart diseases including; coronary artery angiograms, detecting blocked arteries around the heart and even carrying out coronary bypass surgery without using the artificial heart/lung machine.

We are the first in the Eastern region with these technologies the same as hospitals in Bangkok. Today, we also establish Brain center, Emergency Medical Services Center and

Dermatology and Cosmetic Surgery Center.

Since we have strived for excellence from the start, we recruit more than 90 specialists and have invested in modern high-tech medical equipments to help them make diagnosis and treatment more accurately, such as MRI, 64 Slice CT, PACs system (Pictures Archive Communication System). The hospital is now known as the most highly advanced in the eastern region.

To create a more convenient and comfortable atmosphere for our customers and their relatives, the area of Bangkok Hospital Pattaya has expanded with a new 15 storey building which is added to the original complex. Being a 400 beds facility, we improve all interior and landscape, we also train our staff and recreate the services to pamper our customers like being in a 5 star hotel.

Orthopedic Surgeon

*Narintara Boonjongcharoen
M.D.*

- Thai Board of Orthopedics
- International member, American Academy of Orthopedics Surgeon
- Member, The Royal College of Orthopedic Surgeons of Thailand
- Member, Thai Association for The Study of Pain



"The package prices we will quote you are for a standard, non-complicated procedures. Complications and surgeon discretion may result in extra tests and surcharges levied by the hospital, the payment of which is the responsibility of the client and paid directly to the hospital. Thank you."



CHOOSE FROM 3 PREMIUM HOTELS IN PATTAYA, WITH SPECIAL OFFERINGS FOR WELLNESS TRAVEL CLIENTS

Inclusions*

MARRIOTT RESORT AND SPA

Room upgrade, subject to availability,
Complimentary Breakfast for two
20% discount on food and beverage
Complimentary internet in room
Airport and Hospital transfers included

MARRIOTT RESORT AND SPA DELUXE ROOM

All rooms feature wooden floors, One King or Two twin beds and a private balcony/terrace. All rooms facing the ocean or tropical gardens and pool. Individually controlled air condition, safety box, Satellite TV programming, on-demand movie system.
Complimentary coffee & tea making facilities, fully equipped private bar with snacks.

Inclusions*

AMARI ORCHID RESORT

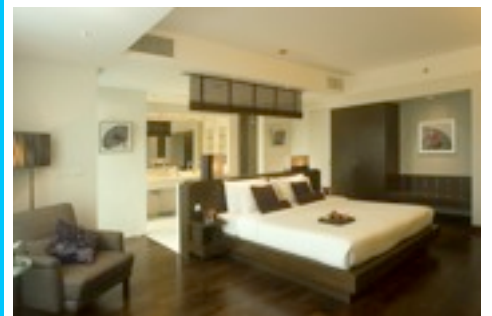
Room upgrade, subject to availability
Complimentary Breakfast for two
20% discount on food and beverage
20% discount on a la carte Spa menu
Complimentary internet in room
Airport and Hospital transfers included

AMARI ORCHID RESORT (GARDEN WING) Superior Room

Superior Rooms. Offering beautiful garden and pool views, the Superior rooms are stylishly furnished in warm tones with wooden panels and local fabrics. A choice of queen-sized or twin beds is available. These rooms have broadband internet access, satellite TV, easy chairs and tea & coffee-making facilities.

AMARI ORCHID RESORT (OCEAN TOWER) Deluxe room

Ocean Deluxe rooms are specially designed in a vibrant, modern style with large windows and a small private balcony overlooking Pattaya bay. These rooms feature excellent amenities, including a flatscreen TV, a DVD player, tea & coffee-making facilities, as well as a striking open bathroom with a bathtub, a walk-in shower and a double hand basin.



INCLUSIONS* - SOME INCLUSIONS ARE BASED ON A 7 NIGHT STAY AND MAY NOT BE AVAILABLE WHEN BOOKING LESS THAN 7 NIGHTS

BOOK YOUR TREATMENT TODAY, LET OUR MEDICAL AND HOSPITALITY PARTNERS TAKE CARE OF YOU, GO HOME FEELING AND LOOKING LIKE A NEW PERSON!

The Wellness Travel Company, providing Medical and Life Style Solutions at the best possible price, guaranteed!

PLEASE SEND US YOUR ENQUIRY BY SIMPLY GOING TO THE LINK BELOW
ENQUIRY@WELLNESSTRAVEL.COM



INCLUDED

TREATMENT INCLUSIONS

- Pre-Operative consultation with Surgeon
- Surgeon's Fees
- Anesthesiologists Fees
- Anesthesia : Pre-Anesthetic Drugs, Anesthesia, Medical Gas (Oxygen, Nitrous Oxide)
- Operating Room Charges ; OR Room Use, Recovery Room, Scrub & Circulate Nurse
- Accommodation for 4 nights in the surgical floor including: Room, Nursing Service Charges, Service
- Charges, Regular menu food charges



- Private single (1) bed with meals
- Standard Implant
- GST/VAT & all taxes

DEAR WELLNESS TRAVELER, HERE WE PROVIDE YOU WITH THE INFORMATION YOU NEED FOR A BALANCED DECISION, PROVIDING YOU WITH ALL INCLUSIONS ON YOUR TREATMENT.

MEANING THERE ARE NO 'SURPRISES' WHEN LEAVING THE HOSPITAL.

WE AT THE WELLNESS TRAVEL COMPANY STAND BEHIND OUR PRODUCT, THAT MEANS NO MARK-UP'S OR HIDDEN FEES!

MOST IMPORTANTLY, WE ARE HERE, ON THE GROUND, NOT 1000 MILES AWAY AND AT YOUR SERVICE 24/7!

Friendly, but essential advice: Be very careful if attempting to plan your own international medical travel program.

There are many issues that are not apparent to the first time medical tourist. One small oversight can be the difference between a successful and unsuccessful surgery and experience abroad.

Let us assist you in making all the right choices. By working with a full service medical tourism company that offers a guarantee, you will greatly reduce the possibility of something going wrong. We take the process of Medical Travel very seriously.

After all, It is your health we are talking about!

The Wellness Travel Company has your best interest at heart, we do not represent the hospitals, we represent you!

NOT INCLUDED

- Take home medications and supplies
- Laboratory Testing necessary for the procedure if required by surgeon as CBC, PT & PTT, Urinalysis, Anti HIV
- Radiology Studies : Chest X-ray, if required
- Other charges not related to the procedures
- Charges for other procedure or other plastic surgery
- Charges for OPD incurred prior to the surgery
- Charges for inpatient stays in excess of 4 nights.
- Additional charges for these days including room and other charges will be added to the package price at normal hospital room rates
- Charges for intensive care, if necessary
- Items of a personal nature such as in-room drinks, telephone charges and guest meals will be charged at the normal rates in effect
- Post operative consultations/follow up appointment

PLEASE SEND US YOUR ENQUIRY BY SIMPLY GOING TO THE LINK BELOW
ENQUIRY@WELLNESSTRAVEL.COM